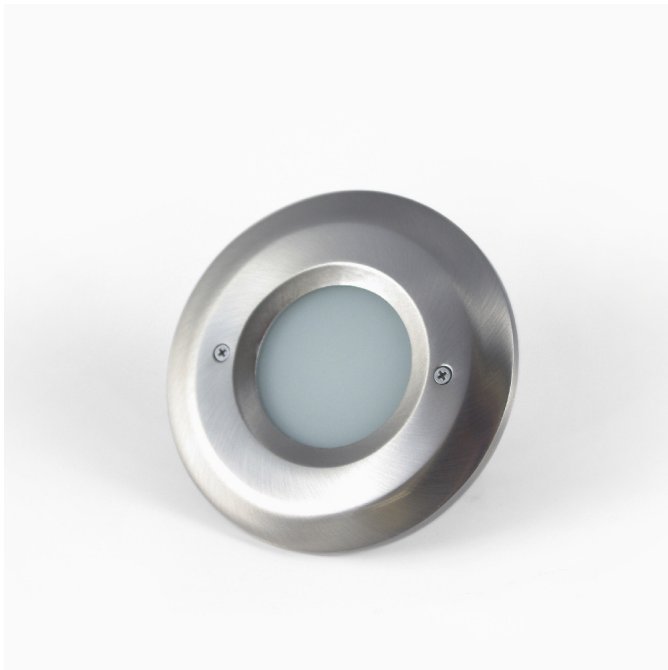


## RD05 LED Step Light



Fits into standard round North American junction box. Trims styles are available as Window or Louvered and can be finished in Brushed Nickel, Black, White, Dark Bronze, or Chrome. Wet location rated, also indoor with cETLus for Canada and USA.

Rating: Not Rated Yet

**Price**

[Ask a question about this product](#)

### Description

ALEDECO Global's ETL Listed RD05 LED Step Light fits standard round North American junction box. Wet Location rated. Dimmable.

Trims available in all styles and colors.

Includes: LED light engine, outdoor gasket, and trim.

Specifications Chart

Product Code	ALED-RD05HV (High Voltage) ALED-RD05LV (Low Voltage)
Trim Code	ALED-RD05-TR-W (Window) ALED-RD05-TR-L (Louvered)
Voltage	100-240V AC or 12V AC/DC
Wattage	2.5W
Lumens	175
Color Temperature	WW 2700K / 3000K / 4000K / CW 5000K / RGB (12V DC)
Dimensions	Fits standard round junction box
Light Engine Dimensions	Ø3.44 x H 2.13" (Ø60 x H87mm)
Trim Options	Window & Louvered
Trim Dimensions	Ø4.76 x 0.35" (Ø121 x H9mm)
Finish Options	Brushed Nickel, Black, White, Dark Brown, Chrome
Certifications	RoHS Compliant, cETLus, CE - wet location rated

Features

- For indoor and outdoor applications
- cETLus listed for indoor and outdoor wet applications
- Fits standard octagon/round junction boxes
- Simple to install

- High-quality components
- We can package trim and light engine separate or together
- Dimmable
- +50,000 hour lifespan
- 3 years warranty

---

### Applications

- Step lighting
- Path lighting
- Deck lighting